



The Gatehouse, London, W4
Guide Price £899,950

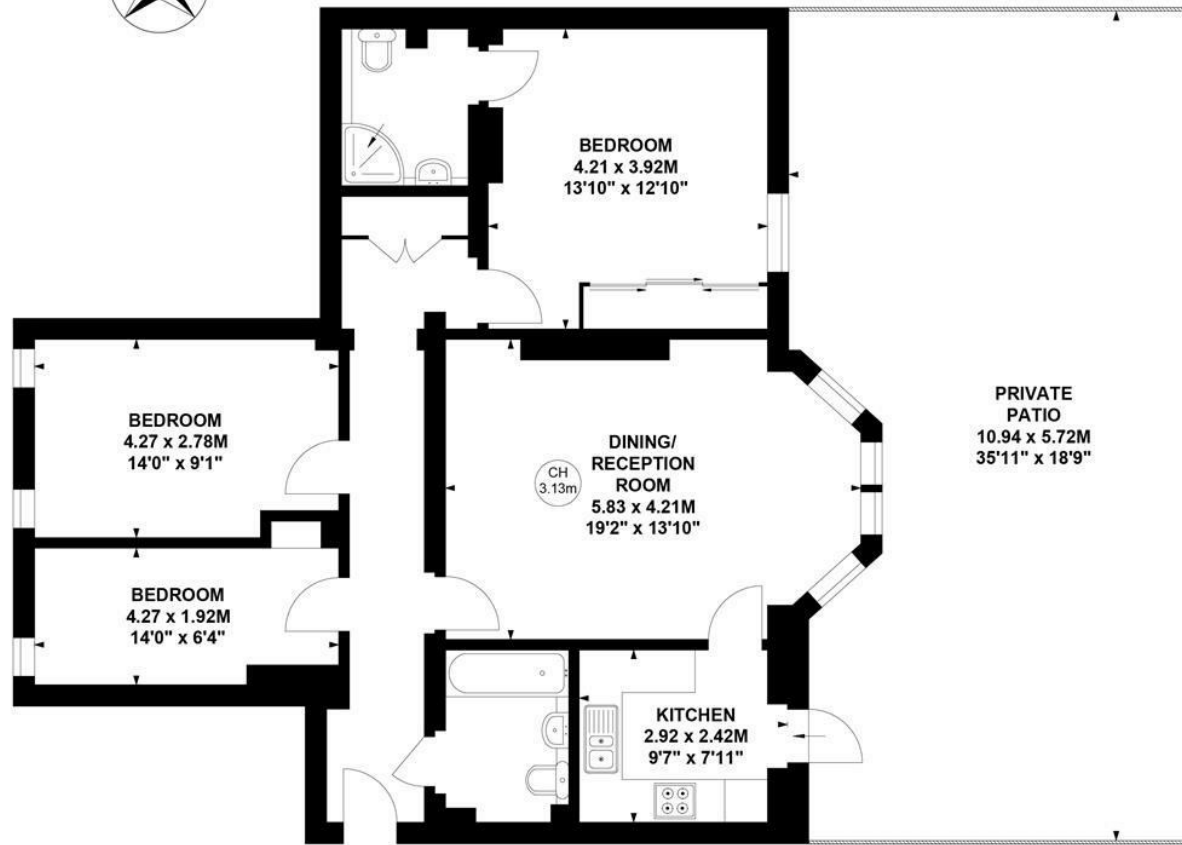


An impressive three-bedroom ground-floor apartment forming part of this landmark detached building set within extensive grounds adjoining Chiswick House and Gardens. The apartment benefits from generous proportions and excellent natural light, with the accommodation comprising a spacious 19'2 reception room with 3.13m high ceilings and a bay window overlooking the communal gardens, a separate fitted kitchen with doors leading onto the large private patio area, which in turn opens onto the communal gardens. The principal bedroom has an en-suite shower room, with two further bedrooms, a family bathroom, and an entrance hall completing the layout. The communal gardens extend to over 200 ft and enjoy complete privacy with no overlooking properties. The apartment also benefits from secure gated entry, a large storage space in a separate outbuilding, secure bike storage and two allocated parking spaces. The Gatehouse is well located for the amenities on Chiswick High Road and transport links, including Chiswick (main line) and Turnham Green (District Line) Stations, and easy access to the A4 and M4 for routes in and out of London. Offered with no onward chain.



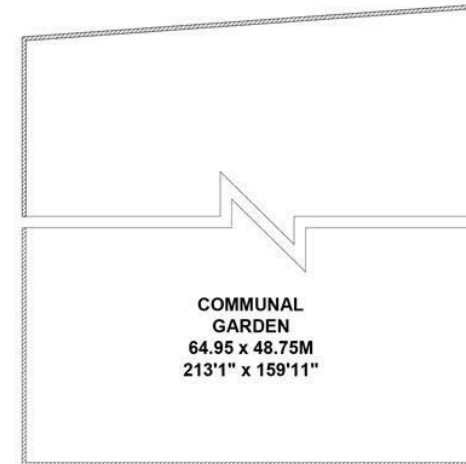
The Gatehouse, W4

Approximate Gross Internal Area
91.64 sq m / 986 sq ft



Ground Floor

Key :
CH - Ceiling Height



(Not show in Actual
Location / Orientation)

Not to scale, for guidance only and must not be relied upon as a statement of fact.
All measurements and areas are approximate only

- Ground floor apartment in landmark building
- Three beds/two baths
- Two allocated parking spaces
- Grand communal gardens extending to over 200'
- 19'2 Reception room
- No onward chain
- Tenure - Leasehold + share of freehold
- Lease Length - 979 Years remaining
- Ground Rent - £600 pa
- Service Charge - £6307 pa
- Local Authority - Hounslow
- Council Tax - Band E

